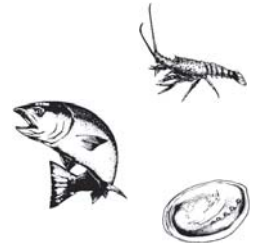




AQUATIC ANAESTHETIC

APPLICATIONS

- FISH MEASUREMENT AND TAGGING
- LIVE FISH TRANSPORTATION
- HEALTH MANAGEMENT
- FISH HUSBANDRY
- BROODSTOCK MANAGEMENT



BENEFITS

- EFFECTIVE AT LOW CONCENTRATIONS
- WIDE MARGIN OF SAFETY
- FISH SHOW FAST RECOVERY
- GENTLE AND HUMANE IN ACTION

AQUI-S[®] 20E is a water dispersible liquid anaesthetic for finfish, crustacea and abalone. AQUI-S[®] 20E can be used for all fish husbandry and transport applications.

Sedating fish with AQUI-S[®] 20E prior to and during a handling event will minimise physical activity by the animal, reduce the metabolic rate and mitigate the stress response by minimising the release of stress hormones. Consequently, fish have improved condition and survivability after handling.

APPLICATION

HANDLING - For practices where animals are being directly handled i.e. health and weight checks.

TRANSPORT - For long exposure situations (1-30 hrs) when fish sedation is all that is required.

CONCENTRATION

15 to 30 ppm active

2.5 to 5 ppm active

USE

AQUI-S[®] 20E can be mixed directly with treatment water to form the final concentration. Vigorous agitation will ensure uniform mixing.

PROPERTIES

APPEARANCE

Clear viscous liquid

ACTIVE INGREDIENT

Eugenol

ACTIVE INGREDIENT PROPORTION

10 %

SUITABLE ENVIRONMENT

Fresh and Saltwater



For more information please visit www.aqui-s.com

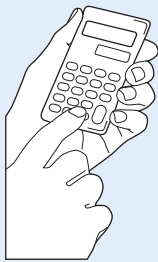
AQUI-S 20E

Effective anaesthetisation of aquatic animals is dependant upon the anaesthetic agent being rapidly and evenly dispersed throughout the water column. AQUI-S® 20E has been specifically formulated to achieve uniform mixing of the anaesthetic agent in the water with the formation of a very fine emulsion. Rapid and uniform mixing of AQUI-S® 20E within the water column can be best achieved by introducing the required volume in conjunction with agitation, i.e. aeration or physical agitation. This will form the anaesthetic working solution.

PRICE

| | |
|-----|------------|
| 1 L | USD 198.00 |
| 4 L | USD 730.00 |

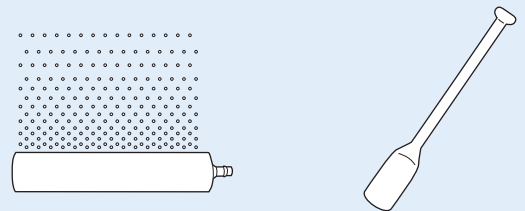
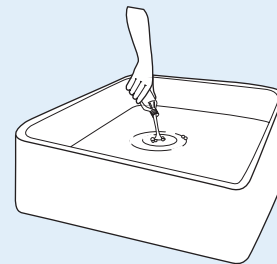
1 : CONCENTRATION CALCULATION



Calculate amount of AQUI-S® 20E required. For example:

- Determine concentration required:
e.g. 125 ppm = 125 mL/m³
- Determine volume of water in bath: e.g. 21 gallons
Conversion to m³ = $\frac{21 \times 3.79}{1000} = 0.08 \text{ m}^3$
Calculate volume of AQUI-S® 20E for the desired concentration: e.g. 125 x 0.08 m³ = 10 mL
- To convert from mL/m³ to mg/L, multiply by 1.123

2 : PREPARATION OF THE WORKING SOLUTION



Use air diffuser or paddle to gently disperse the solution evenly into the anaesthetic bath.

NOTES

- Specific gravity of AQUI-S® 20E is 1.123
- Parts per million (ppm) can be mg/L or mL/m³

ORDER DETAILS

AquaTactics Fish Health
12015 115th Avenue NE, Suite 120
Kirkland, WA 98034
P: 425 922 4208 | E: tomg@aquatactics.com | www.aquatactics.com